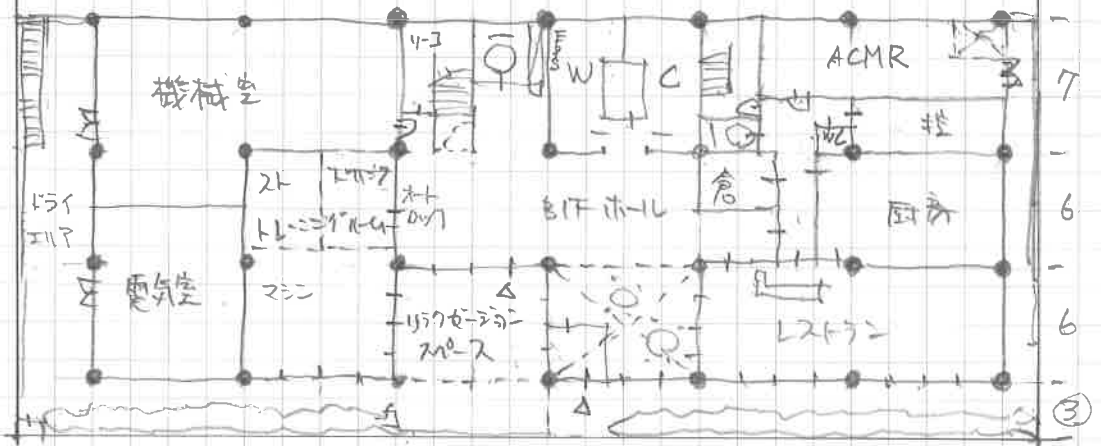


1F平面

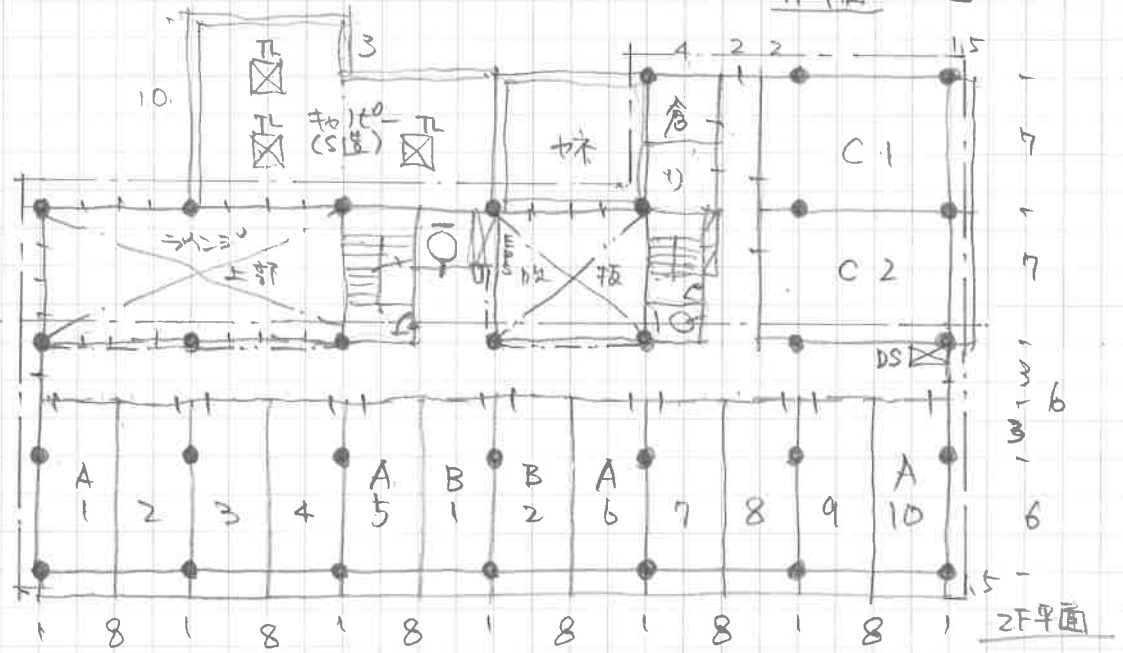
2F $48 \times 19 + 16 \times 7 - 8 \times 7 - 16 \times 7 = 856$
 912 112 56 112
 1F $48 \times 19 + 24 \times 7 - 8 \times 6 - 2 \times 3 = 1026$
 168 48 6
 B1F $48 \times 19 = 912$

計. $2794.0 \leq 2800 - OK$

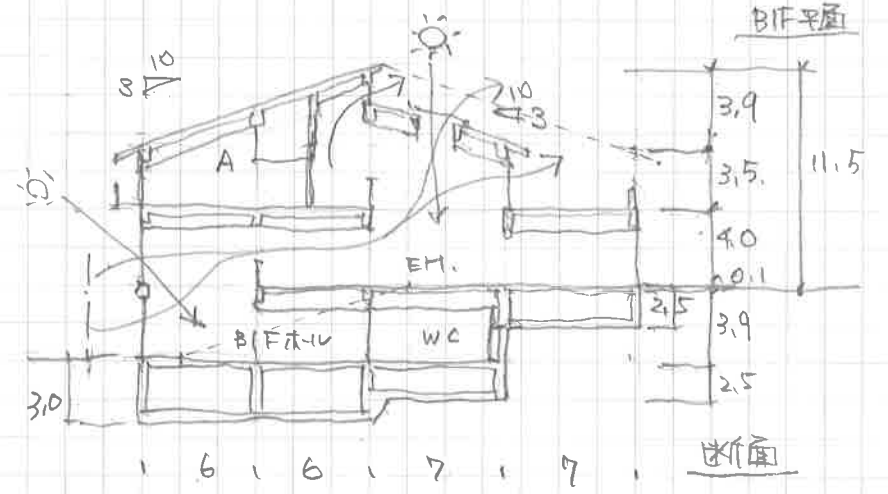
建面 $48 \times 19 + 40 \times 7 + 8 \times 3 + 48 \times 0.5 + 8 \times 0.5 + 16 \times 0.5 + 0.5 \times 14$
 912 280 24(軒) 24(軒) 4(軒) 8(軒) 7(軒)
 = $1259.0 / 2268 = 55.5\% < 60\% - OK.$



B1F平面



2F平面



断面

H29.一級製図本試験 2017.10.09. (17)