

B1F

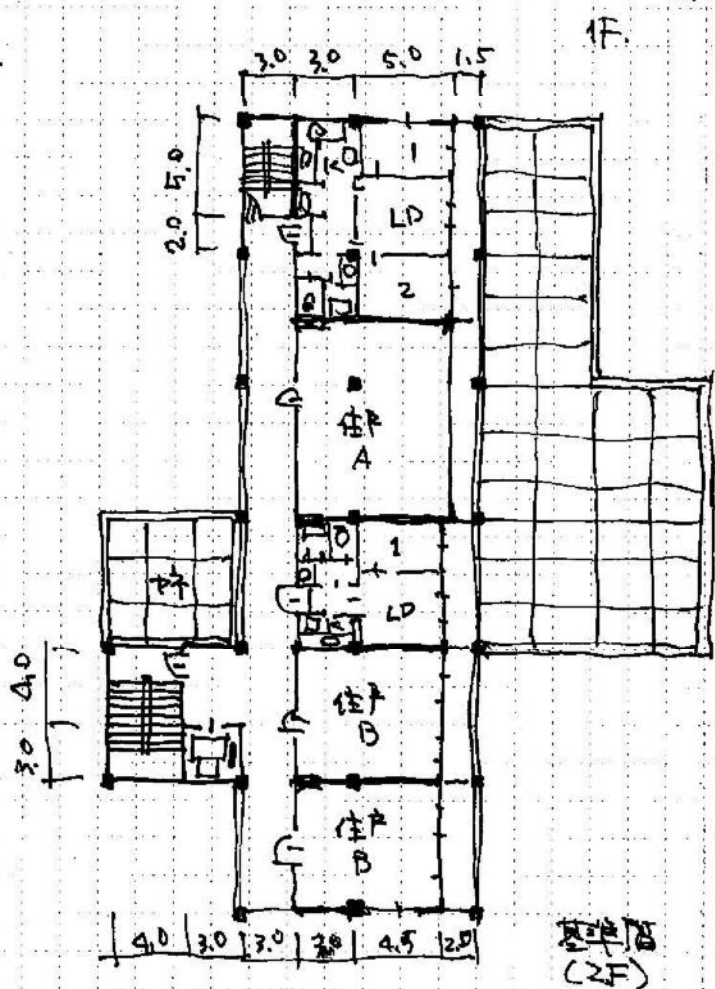
B1F $7 \times 35 + 18.5 \times 42 + 6 \times 25 = 1172$

1F $7 \times 14 + 6 \times 6 + 6.5 \times 24 + 6 \times 28 + 6 \times 14 = 716$

2F $4 \times 7 + 3 \times 3 + 25 \times 21 + 8 \times 21 + 3 \times 5 = 397.5$

2.5F $397.5 \times 4 = 1510$

計 3398 — OK.
(3000 ~ 3600)



標準層 (2F)