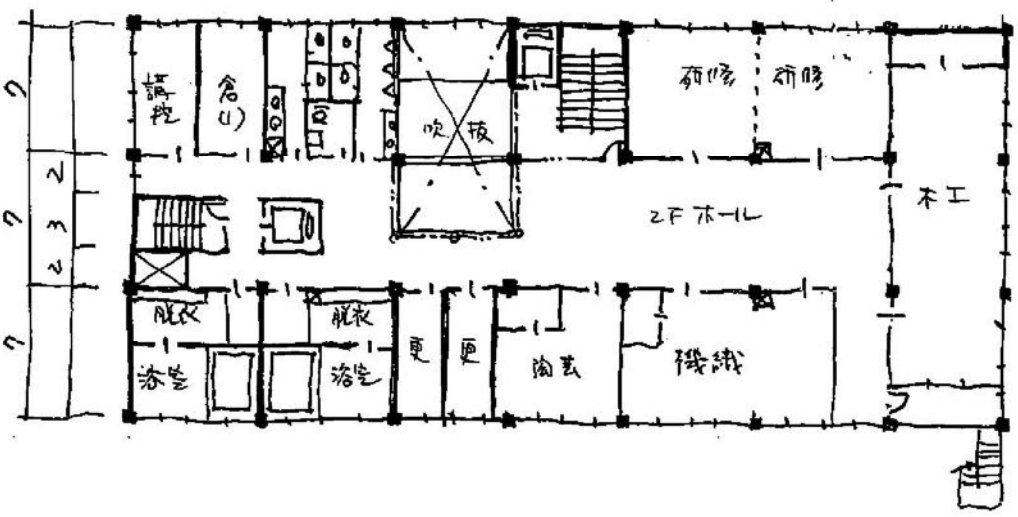


$$26 \times 28 + 13 \times 12 = 884$$



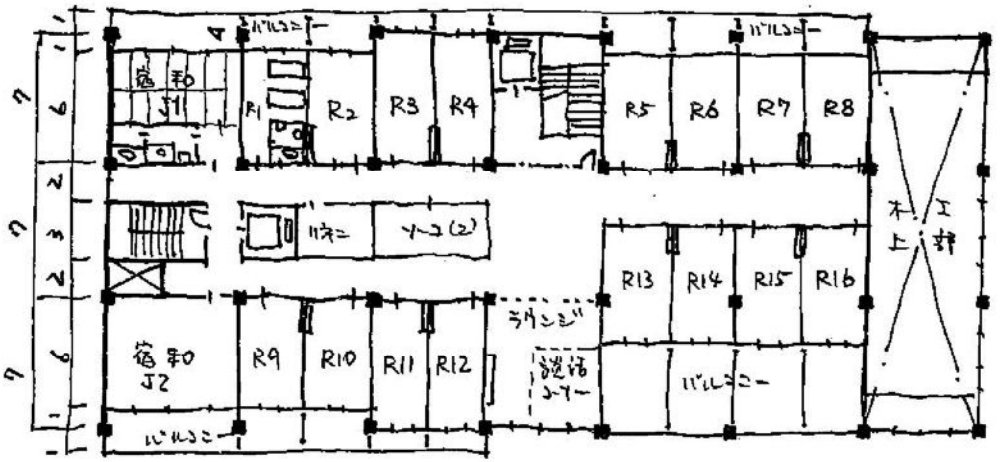
※ 建築面積

$$26 \times 28 + 20 \times 2 + 7 \times 2.5 = 728 + 40 + 17.5 = 785.5$$

$$52 \times 28 = 1456 \times 60\% = 873.6$$

OK

$$46 \times 21 - 6 \times 11 - 2 \times 6 = 888$$



$$40 \times 21 - 11 \times 2 = 728$$

$$11 \times 2 = 14 \times 1 + 14$$

$$112 = 14 \times 1 + 14$$

$$14 \times 5 = 70$$

3F 計 2,500 m<sup>2</sup>