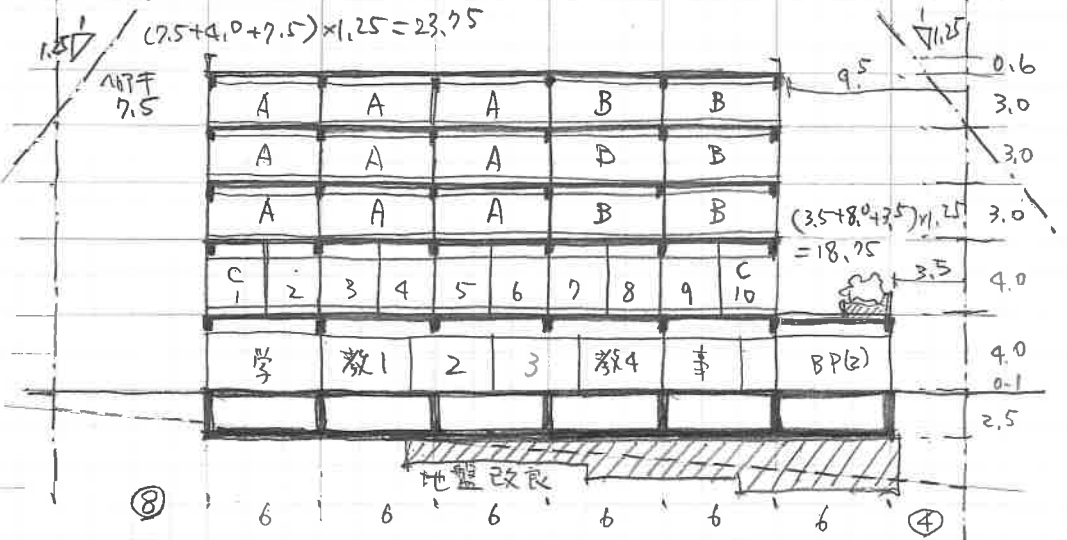
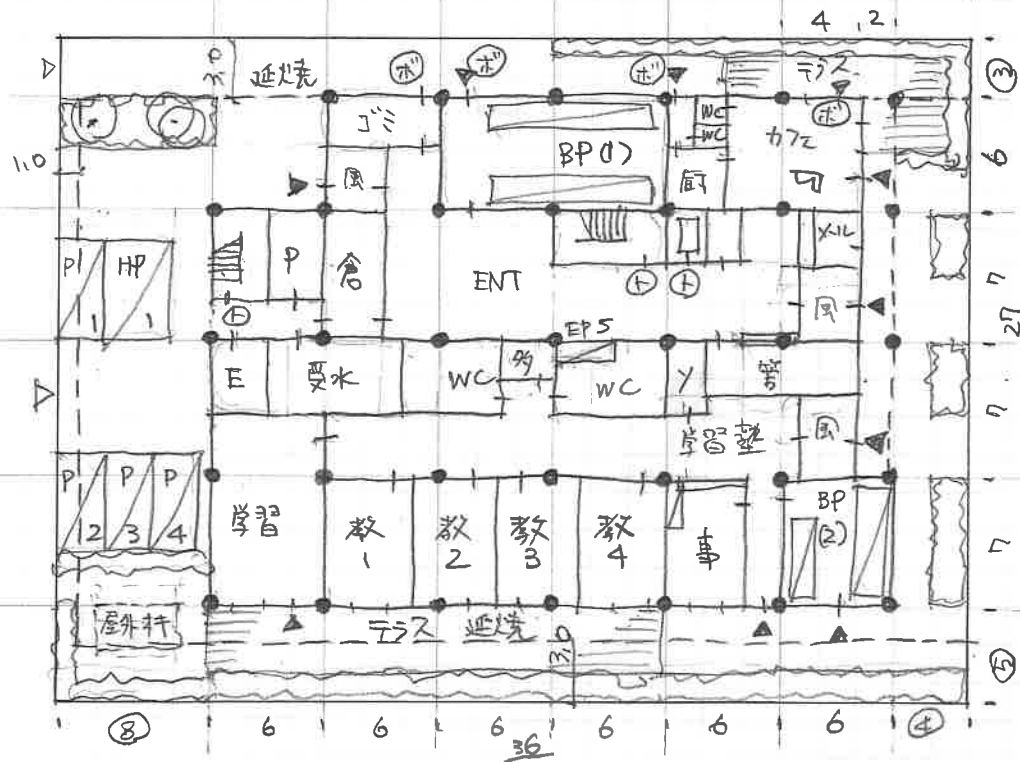
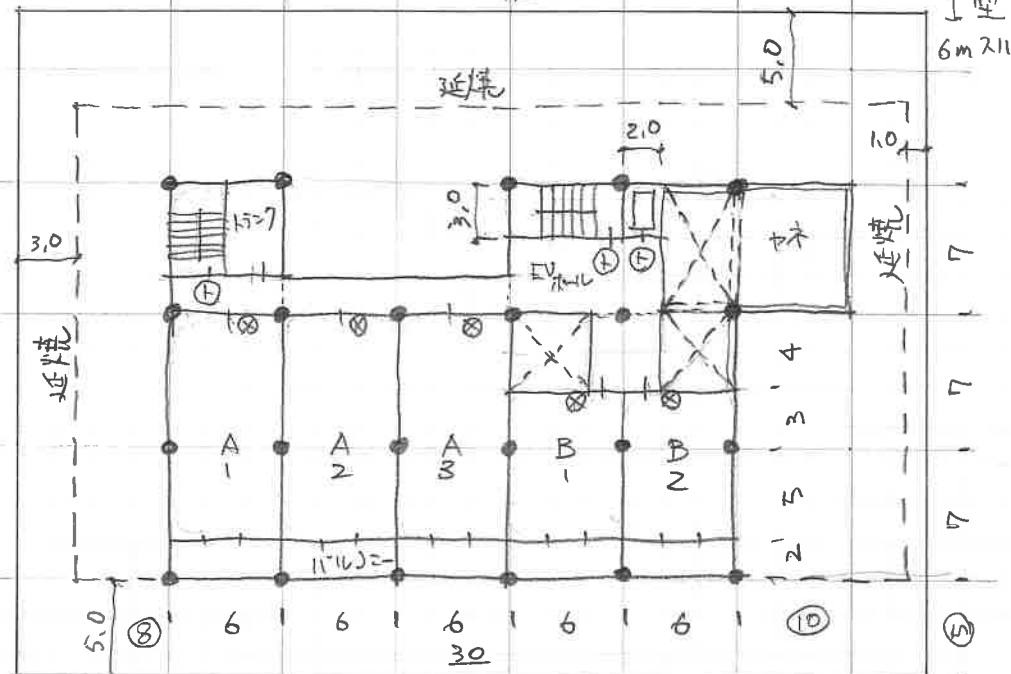
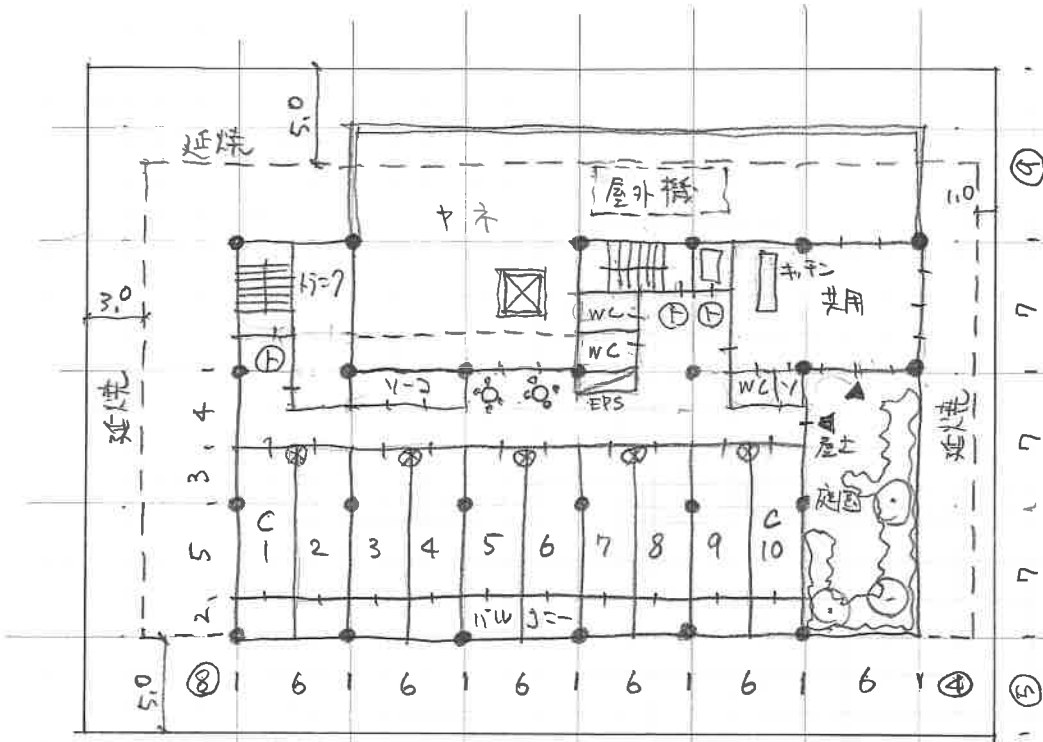
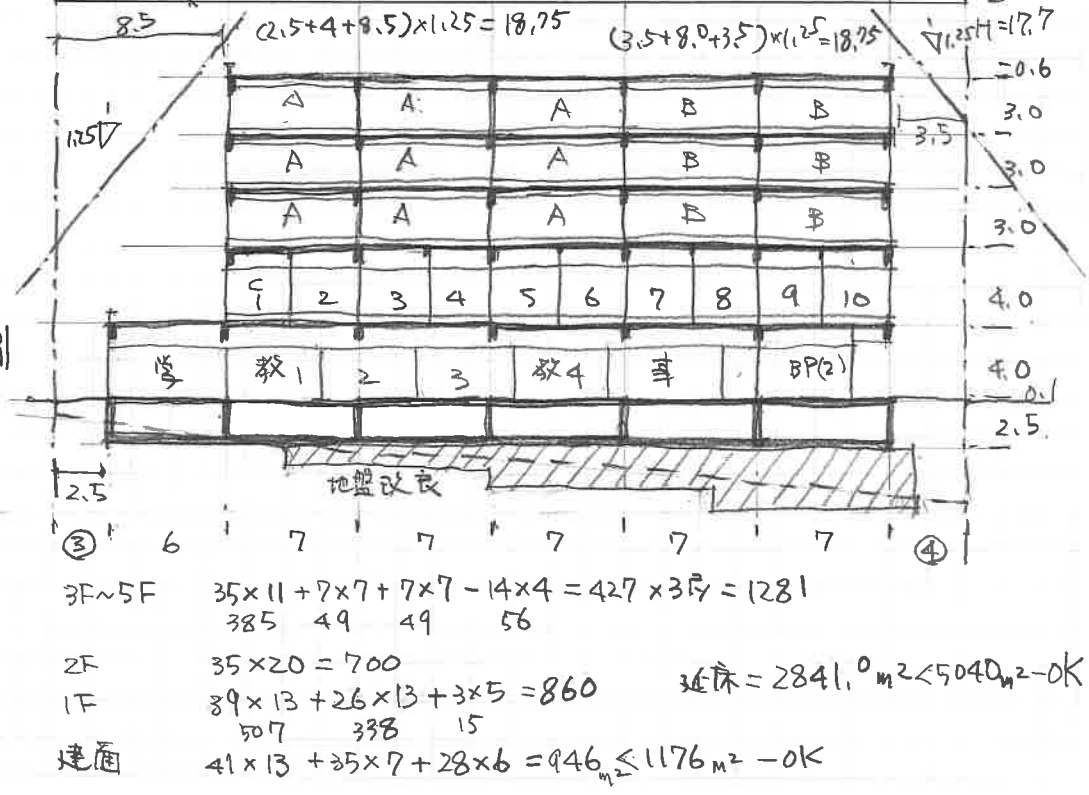
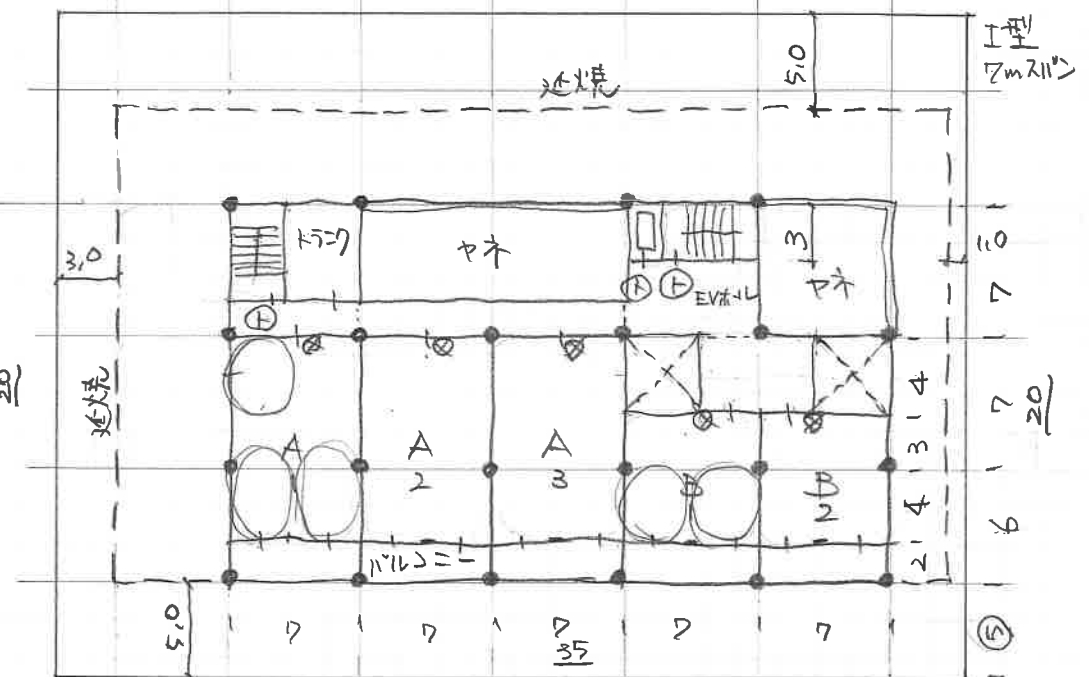
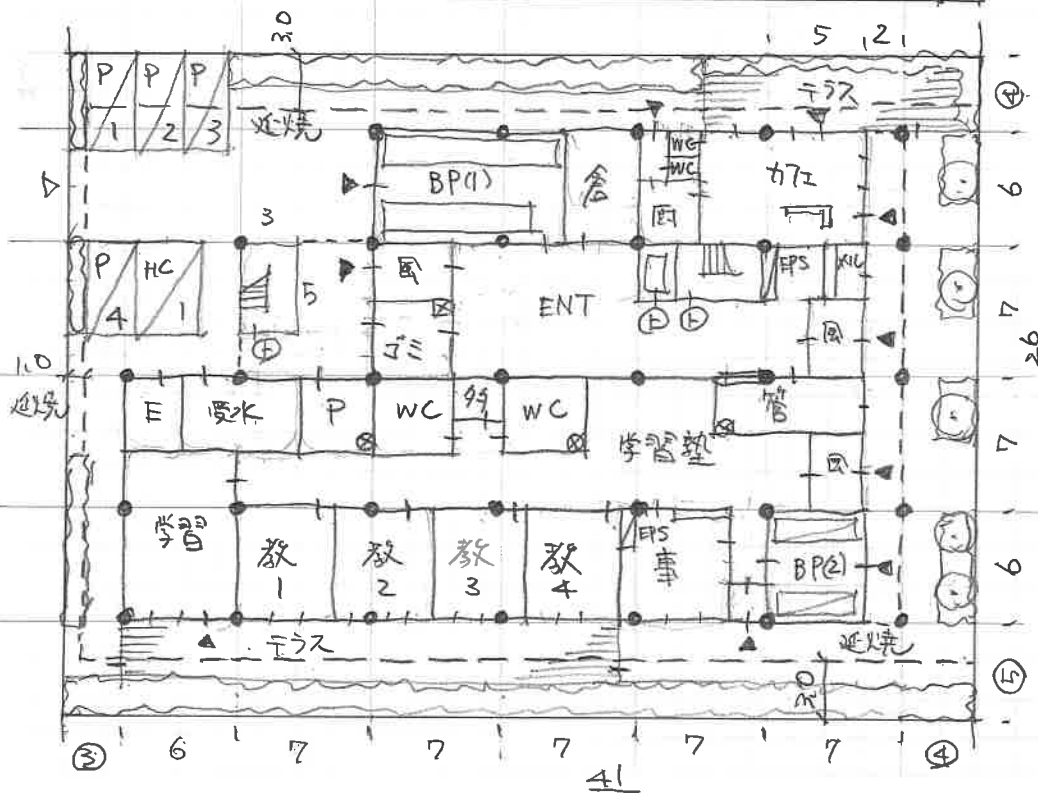
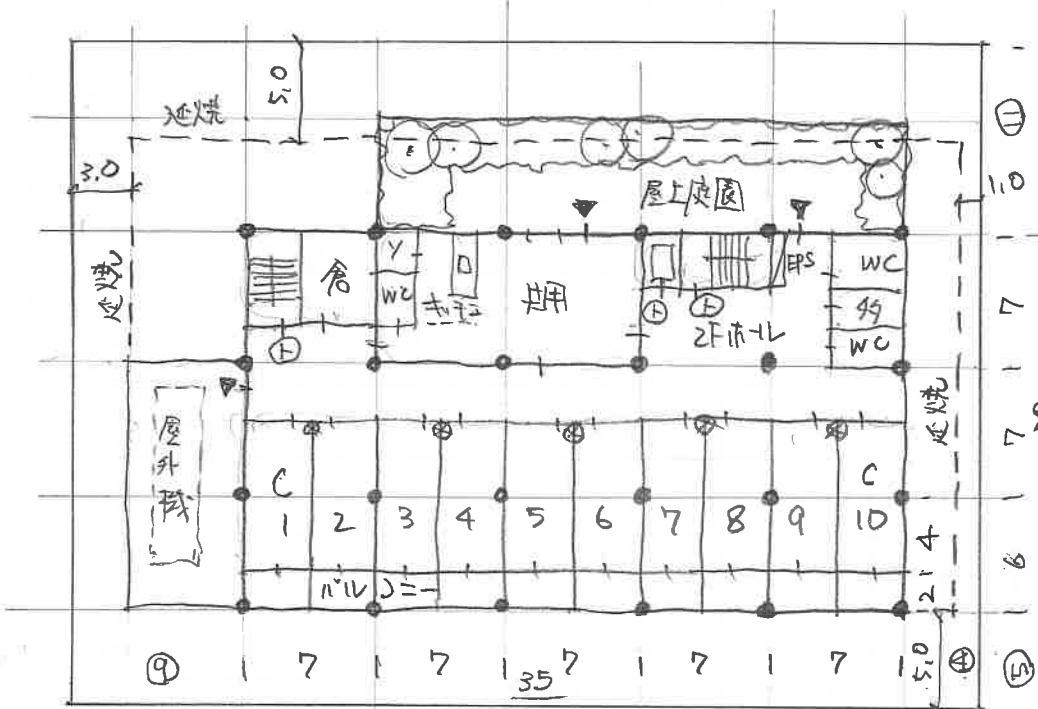
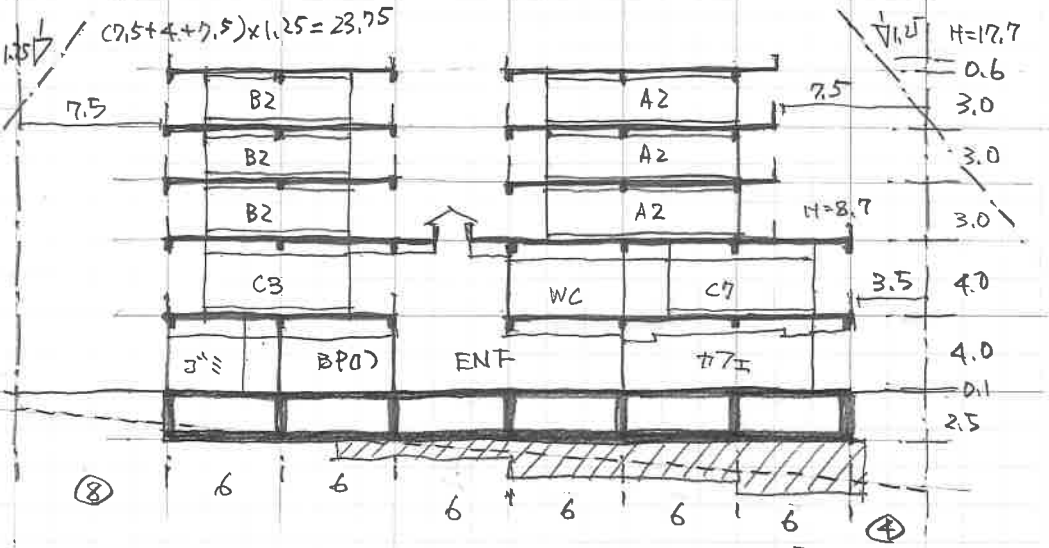
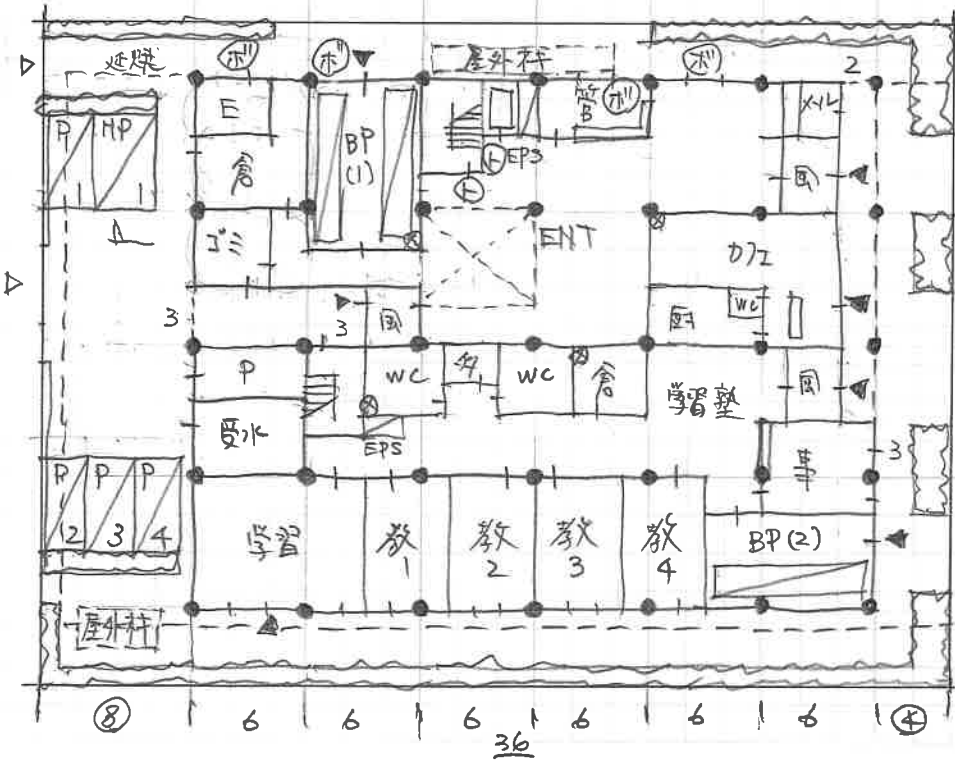
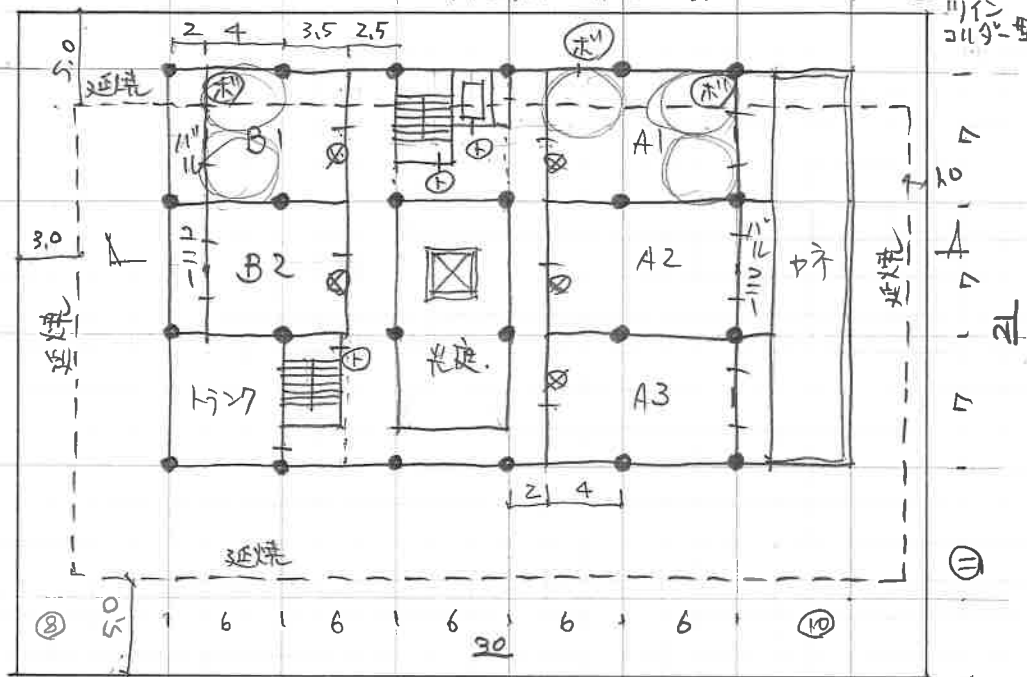
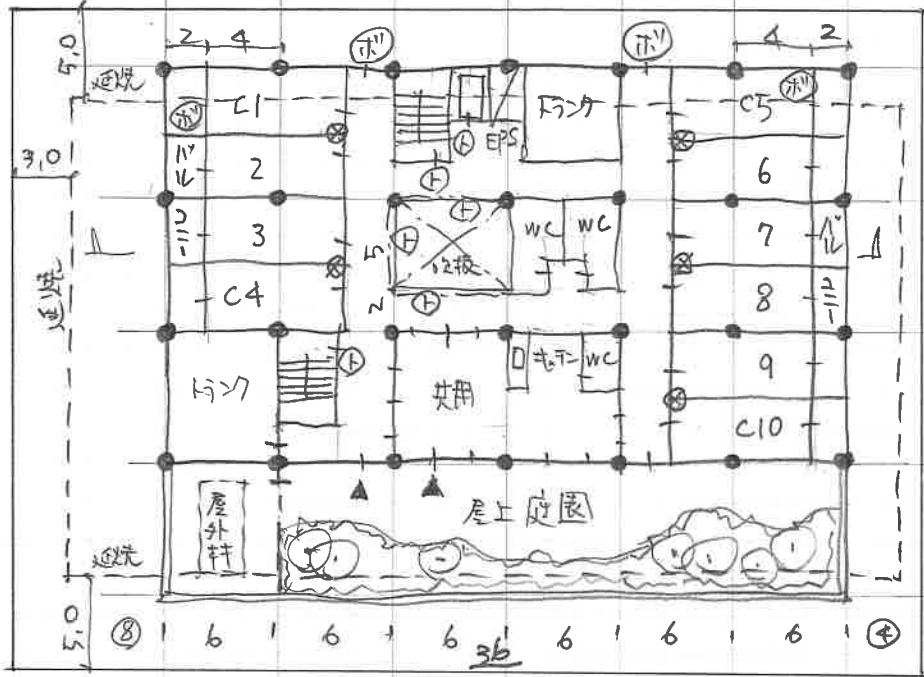


I型
6m x 11.0m



3F~5F $30 \times 12 + 6 \times 7 + 8 \times 7 - 12 \times 4 = 410 \times 3R = 1230$
 $360 \quad 42 \quad 56 \quad 48$
 2F $30 \times 12 + 6 \times 7 + 18 \times 7 = 528$
 $360 \quad 42 \quad 126$
 1F $36 \times 21 + 30 \times 6 - 2 \times 21 = 894$
 $756 \quad 180 \quad 42$
 延焼 $36 \times 21 + 30 \times 6 = 936m^2 < 1176m^2 - OK$
 延焼 = $2652.0m^2 < 5.090m^2 - OK$





3F~5F $9.5 \times 21 + 6 \times 7 + 10 \times 21 - 2 \times 14 = 423.5 \times 3R = 1270.5$
 199.5 42 210 28

2F $36 \times 21 - 2 \times 14 - 2 \times 21 - 6 \times 5 = 656$
 756 28 42 30

1F $36 \times 28 - 9 \times 3 - 2 \times 18 = 945$ 延床 = 2871.5m² < 5040m² - OK
 1008 27 36

建蔽 $36 \times 28 = 1008 \text{m}^2 < 1176 \text{m}^2 - \text{OK}$