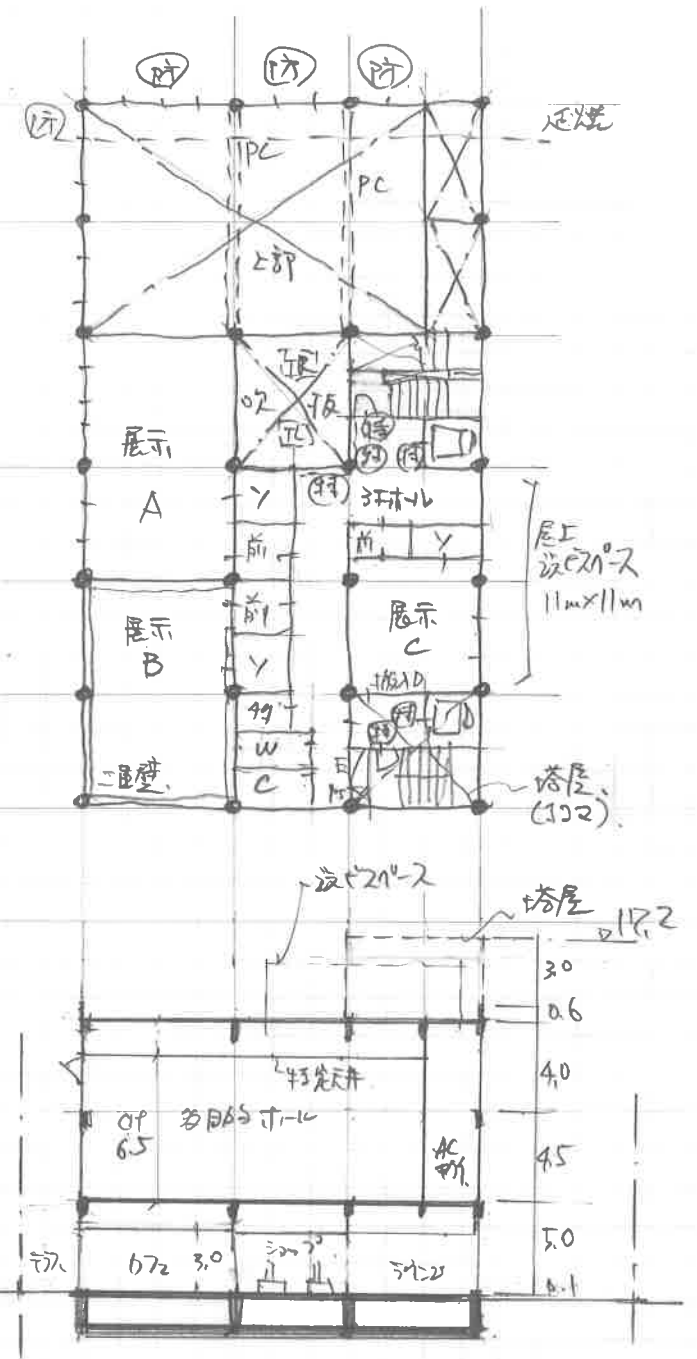
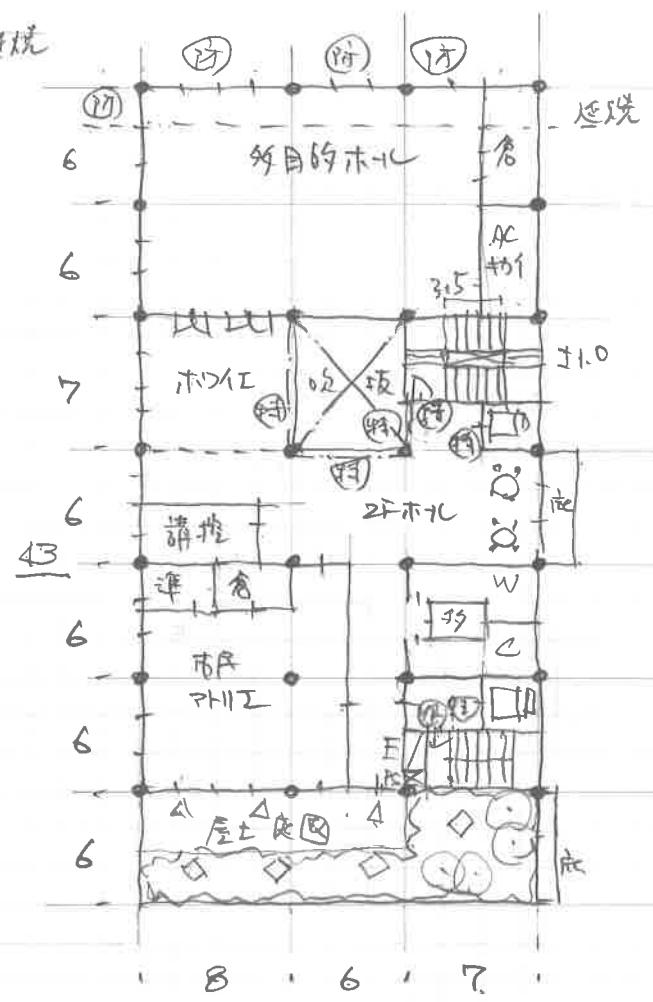
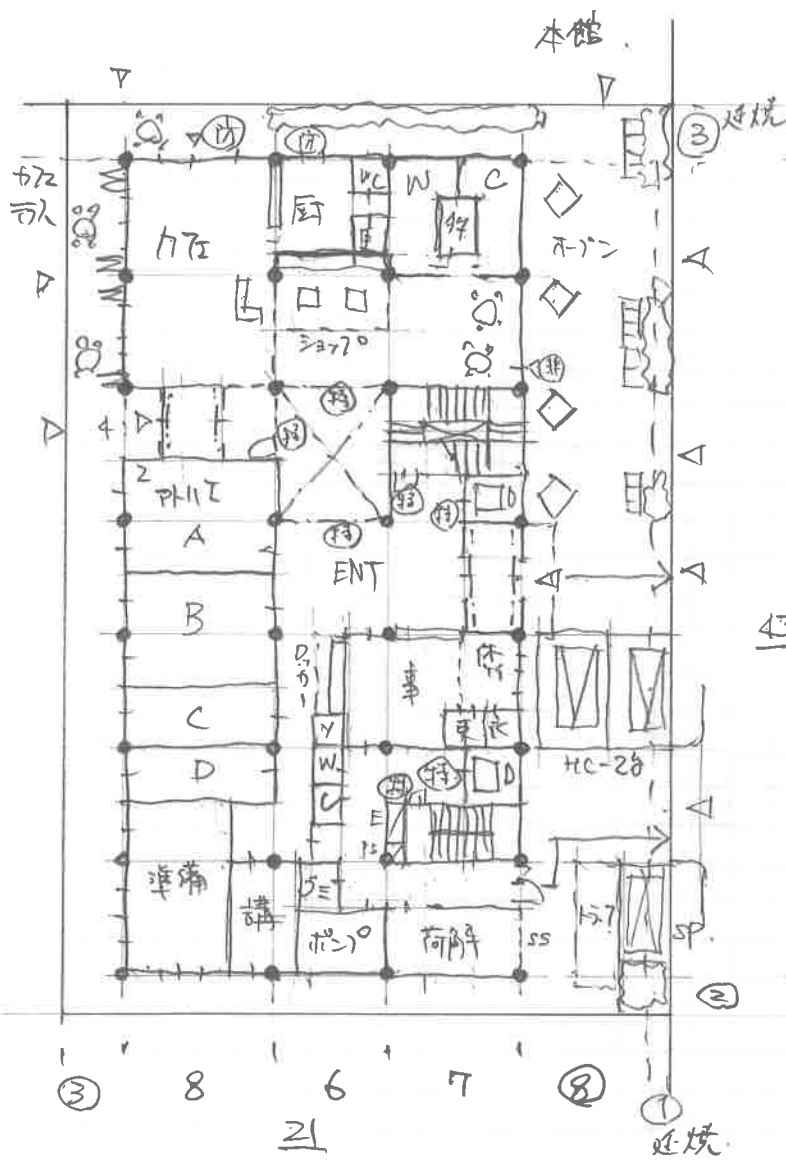


201. 一級製図本試験
12.08 実施

2019.12.14
③

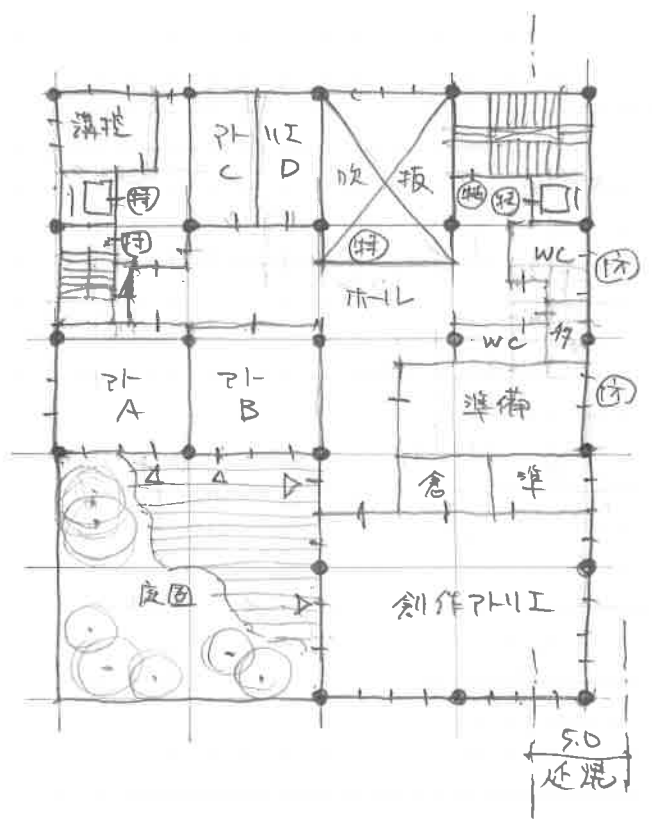
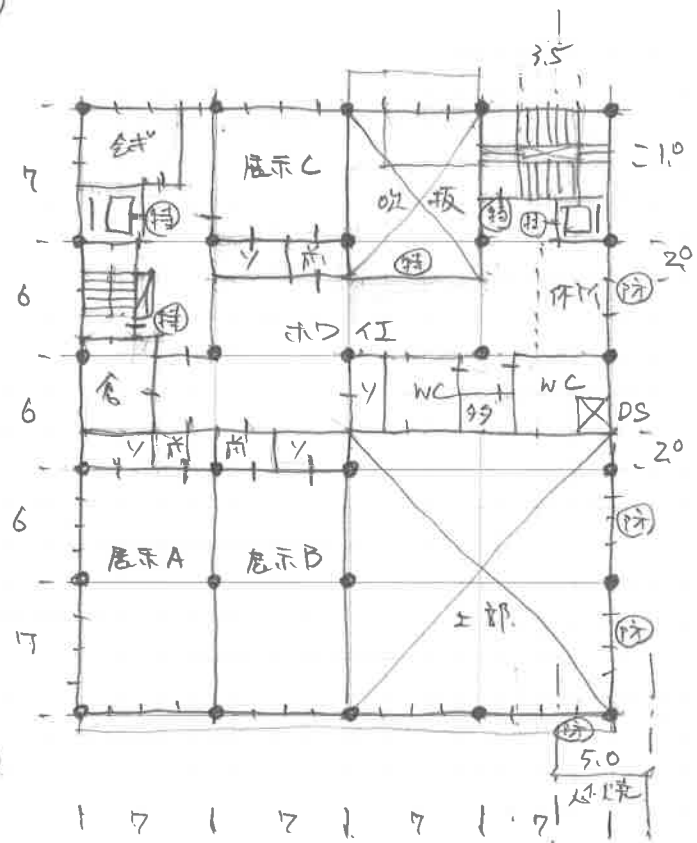
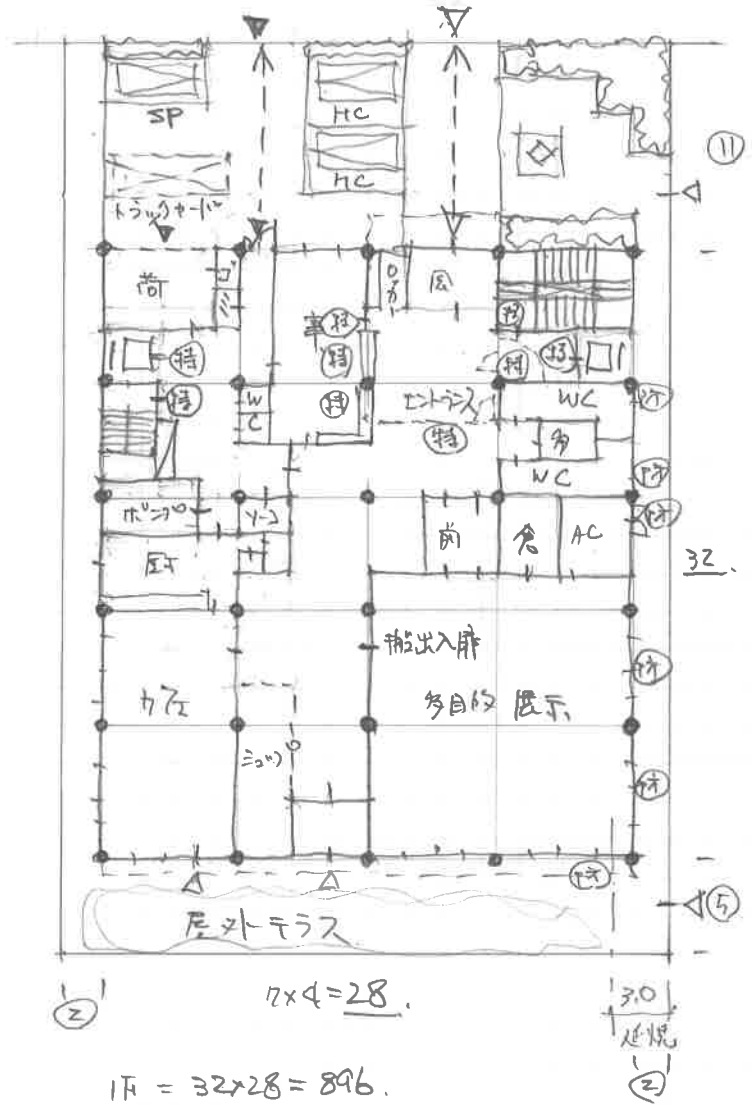


③2. 1F = 43 × 21 = 903
 廊下 △ 4 × 2 = 8
 895.
 建築面積 43 × 21 + 6 × 1 = 909 - OK.

2F = 37 × 21 = 777
 吹上 △ 7 × 6 = 42
 塔屋 △ 1 × 3.5 = 3.5
 781.5
 合計 2106.5 < 2200 - OK.

3F = 25 × 21 = 525
 吹上 △ = 42
 塔屋 △ = 3.5
 479.5

R61, 一级製図本試験
10.13 実施



$$2F = 32 \times 28 - 15 \times 14 - 9 \times 7$$

$$= 896 - 210 - 63 = 623.$$

$$4 \text{ 階段 } 1 \times 3.5 \times 3.5 = 619.5$$

$$3F = 32 \times 28 - 13 \times 14 - 9 \times 7$$

$$= 896 - 182 - 63 = 651.$$

$$4 \text{ 階段 } 3.5 \times 3.5 = 647.5$$

合計 2163 < 2400 - OK.

2019, 10, 23 (4)